

检测报告 Test Report

报告编号 RLSZE001516350002
Report No.RLSZE001516350002

第 1 页 共 7 页
Page 1 of 7

申请单位 深圳众一贸泰电路板有限公司
Applicant SHEN ZHEN TTE CIRCUIT LIMITED COMPANY
地 址 深圳市宝安区松岗镇江边工业区创业二路第 2 栋
Address JIANGBIAN INDUSTRIAL ZONE,SONGGANG STREET,BAO'AN
DISTRICT ,SHENZHEN,CHINA

以下测试之样品及样品信息由申请者提供并确认

The following sample(s) and sample information was/were submitted and identified by/on the behalf of the client

| | |
|----------------------|-------------------------------|
| 样品名称 Sample Name | 线路板 PCB |
| 样品型号 Part No. | 沉金板 ENIG |
| 样品接收日期 | 2012.12.08 |
| Sample Received Date | Dec. 8, 2012 |
| 样品检测日期 | 2012.12.08-2012.12.12 |
| Testing Period | Dec. 8, 2012 to Dec. 12, 2012 |

检测要求 根据客户要求, 对所提交样品整体测试铅(Pb), 镉(Cd), 汞(Hg), 六价铬(Cr(VI)), 多溴联苯(PBBs), 多溴二苯醚(PBDEs)。

Test Requested As specified by client, to test Lead(Pb), Cadmium(Cd), Mercury(Hg), Hexavalent Chromium(Cr(VI)), Polybrominated Biphenyls(PBBs), Polybrominated Diphenyl Ethers(PBDEs) in the submitted sample(s) and it was tested as a whole.

检测依据/检测结果 请参见下页。

Test Method/Test Result(s) Please refer to the following page(s).

主 检

Rick Lin

审 核

Vangur He

Tested by

Reviewed by

批 准

Danny Liu

日 期

2012.12.12

Approved by

Date

Danny Liu
Technical Manager

No. 38798119

深圳市华测检测技术股份有限公司
Centre Testing International (Shenzhen) Co., Ltd. 广东省深圳市宝安区 70 区鸿威工业园
Hongwei Industrial Zone, Bao'an 70 District, Shenzhen, Guangdong, China

检测报告 Test Report

报告编号 RLSZE001516350002
Report No.RLSZE001516350002

第 2 页 共 7 页
Page 2 of 7

结论Conclusion

| 测试样品 Tested Sample | 依据指令 According to directive | 结果 Result |
|-------------------------------|----------------------------------------|----------------------|
| 提交样品 Submitted Sample | 2011/65/EU* | 合格 Pass |

*=2011 年 7 月 1 日，欧盟在其官方公报上正式发布了 RoHS（2002/95/EC）的重订指令 2011/65/EU。
该指令已于欧盟官方公报公布的 20 天后生效。

*=July 1, 2011, the EU Official Journal (OJ) released the directive 2011/65/EU which as a new version of RoHS
Directive (2002/95/EC). The revised directive has entered into force on the twentieth day after its publication in the OJ.

检测报告 Test Report

报告编号 RLSZE001516350002
Report No.RLSZE001516350002

第 3 页 共 7 页
Page 3 of 7

检测依据 Test Method

| 测试项目 Tested Item(s) | 测试方法 Test Method | 测试仪器 Measured Equipment(s) | 方法检测限 MDL |
|-------------------------------------------------|-----------------------------|----------------------------------|--------------|
| 铅 Lead (Pb) | IEC 62321:2008 Ed.1 Sec.10 | ICP-OES | 2 mg/kg |
| 镉 Cadmium (Cd) | IEC 62321:2008 Ed.1 Sec.10 | ICP-OES | 2 mg/kg |
| 汞 Mercury (Hg) | IEC 62321:2008 Ed.1 Sec.7 | ICP-OES | 2 mg/kg |
| 六价铬 Hexavalent Chromium (Cr(VI)) | IEC 62321:2008 Ed.1 Annex C | UV-Vis | 2 mg/kg |
| 多溴联苯 Polybrominated Biphenyls (PBBs) | IEC 62321:2008 Ed.1 Annex A | GC-MS | 5 mg/kg |
| 多溴二苯醚 Polybrominated Diphenyl Ethers (PBDEs) | IEC 62321:2008 Ed.1 Annex A | GC-MS | 5 mg/kg |

检测结果 Test Result(s)

| 测试项目 Tested Item(s) | 结果 Result | 2011/65/EU 指令限值 Limit of Directive 2011/65/EU |
|----------------------------------|-----------|-----------------------------------------------------|
| 铅 Lead (Pb) | N.D. | 1000 mg/kg |
| 镉 Cadmium (Cd) | N.D. | 100 mg/kg |
| 汞 Mercury (Hg) | N.D. | 1000 mg/kg |
| 六价铬 Hexavalent Chromium (Cr(VI)) | N.D. | 1000 mg/kg |

检测报告 Test Report

报告编号 RLSZE001516350002
Report No. RLSZE001516350002

第 4 页 共 7 页
Page 4 of 7

检测结果 Test Result(s)

| 测试项目 Tested Item(s) | 结果 Result | 2011/65/EU 指令限值 Limit of Directive 2011/65/EU |
|----------------------------------------------------|-----------|-----------------------------------------------------|
| 多溴联苯 Polybrominated Biphenyls(PBBs) | | |
| 一溴联苯 Monobromobiphenyl | N.D. | 1000 mg/kg |
| 二溴联苯 Dibromobiphenyl | N.D. | |
| 三溴联苯 Tribromobiphenyl | N.D. | |
| 四溴联苯 Tetrabromobiphenyl | N.D. | |
| 五溴联苯 Pentabromobiphenyl | N.D. | |
| 六溴联苯 Hexabromobiphenyl | N.D. | |
| 七溴联苯 Heptabromobiphenyl | N.D. | |
| 八溴联苯 Octabromobiphenyl | N.D. | |
| 九溴联苯 Nonabromobiphenyl | N.D. | |
| 十溴联苯 Decabromobiphenyl | N.D. | |
| 多溴二苯醚 Polybrominated Diphenyl Ethers(PBDEs) | | |
| 一溴二苯醚 Monobromodiphenyl ether | N.D. | 1000 mg/kg |
| 二溴二苯醚 Dibromodiphenyl ether | N.D. | |
| 三溴二苯醚 Tribromodiphenyl ether | N.D. | |
| 四溴二苯醚 Tetrabromodiphenyl ether | N.D. | |
| 五溴二苯醚 Pentabromodiphenyl ether | N.D. | |
| 六溴二苯醚 Hexabromodiphenyl ether | N.D. | |
| 七溴二苯醚 Heptabromodiphenyl ether | N.D. | |
| 八溴二苯醚 Octabromodiphenyl ether | N.D. | |
| 九溴二苯醚 Nonabromodiphenyl ether | N.D. | |
| 十溴二苯醚 Decabromodiphenyl ether | N.D. | |

测试样品/部位描述 PCB 混测
Tested Sample/Part Description Mixed test, PCB

注释: 对于检测铅, 镉, 汞之样品已完全溶解。
-N.D. = 未检出 (小于方法检测限)
-mg/kg = ppm = 百万分之几

Note: **The sample had been dissolved totally tested for Lead, Cadmium, Mercury.**
-MDL = Method Detection Limit
-N.D. = Not Detected (<MDL)
-mg/kg = ppm = parts per million

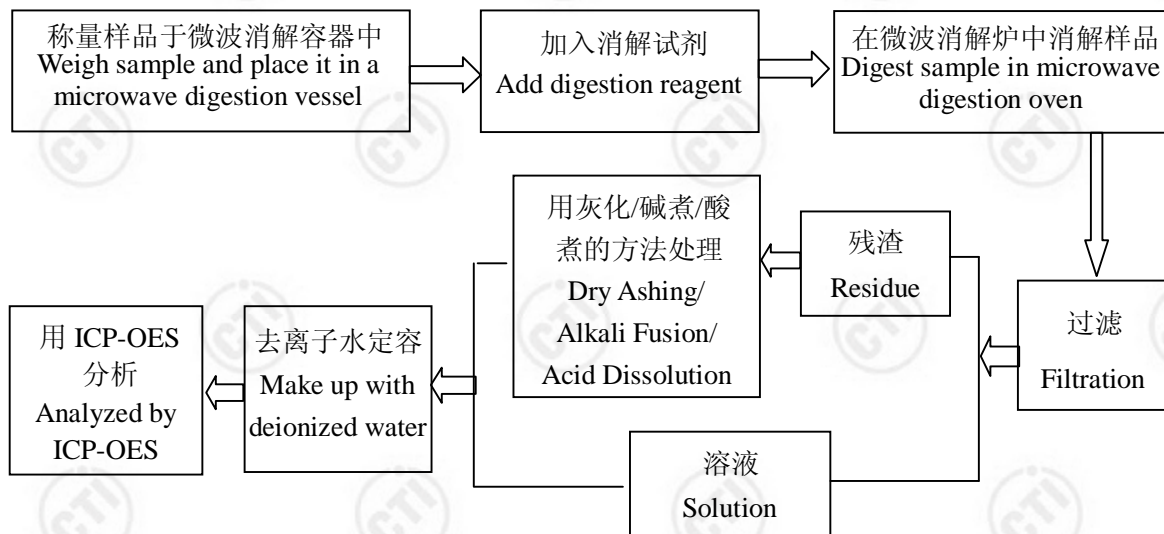
检测报告 Test Report

报告编号 RLSZE001516350002
Report No. RLSZE001516350002

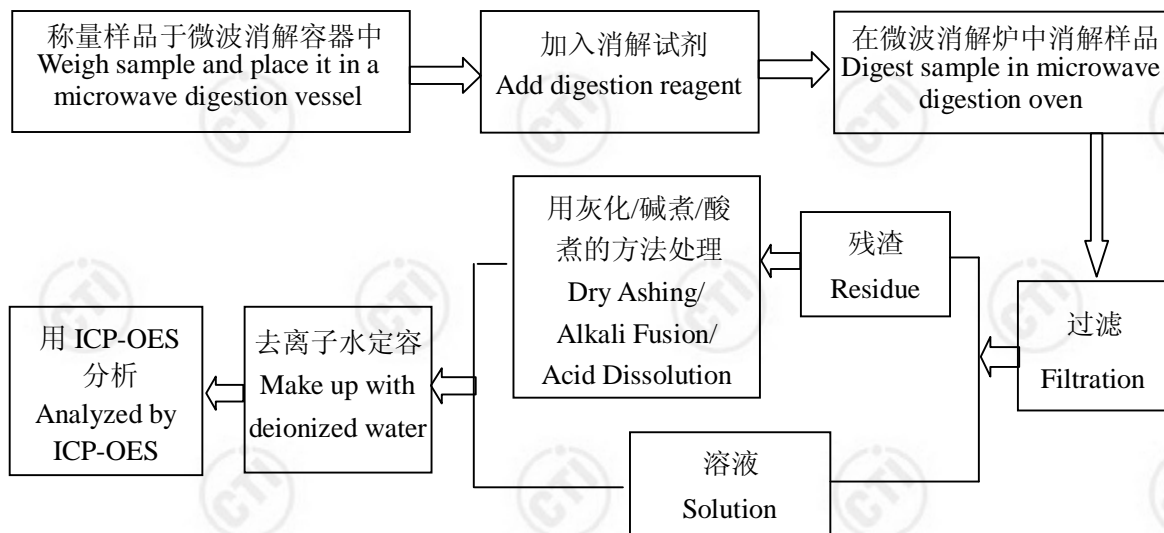
第 5 页 共 7 页
Page 5 of 7

检测流程 Test Process

1. 铅 Lead(Pb), 镉 Cadmium(Cd)



2. 汞 Mercury(Hg)

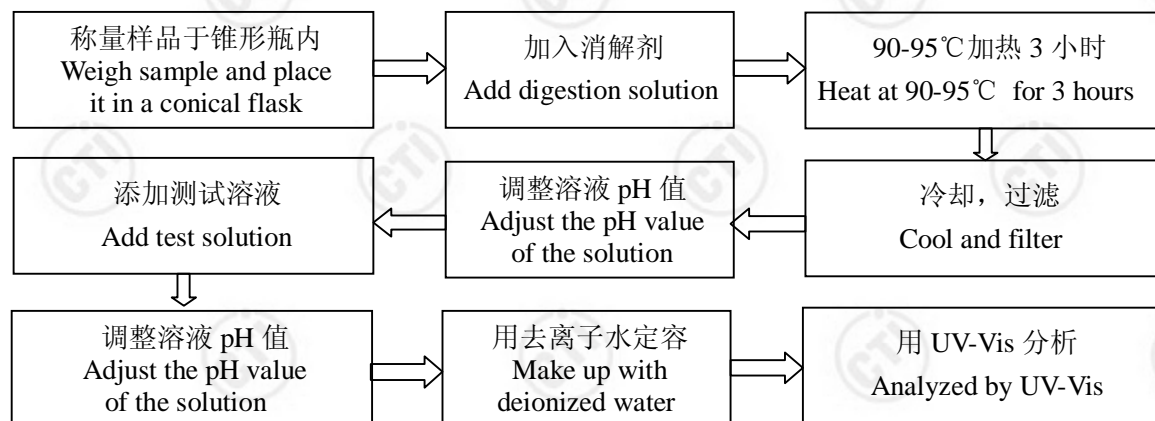


检测报告 Test Report

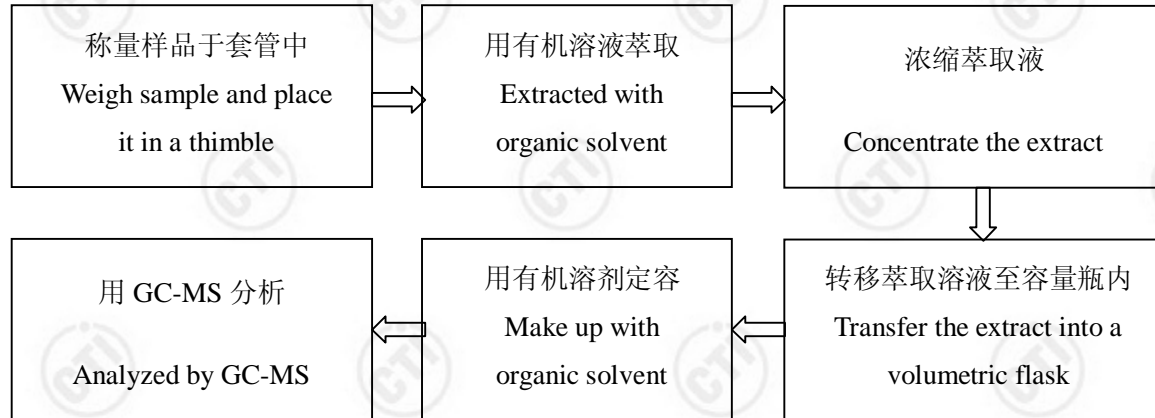
报告编号 RLSZE001516350002
Report No. RLSZE001516350002

第 6 页 共 7 页
Page 6 of 7

3. 六价铬 Hexavalent Chromium (Cr(VI))



4. 多溴联苯 Polybrominated Biphenyls(PBBs), 多溴二苯醚 Polybrominated Diphenyl Ethers(PBDEs)



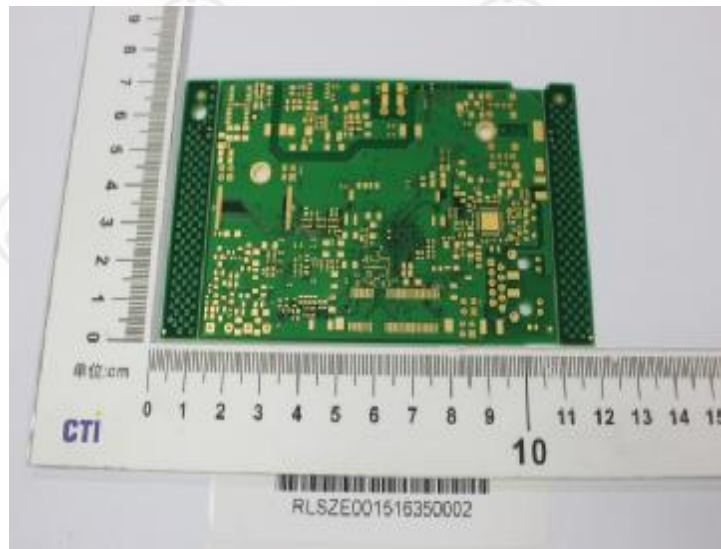
检测报告 Test Report

报告编号 RLSZE001516350002
Report No.RLSZE001516350002

第 7 页 共 7 页
Page 7 of 7

样品图片

Photo(s) of the sample(s)



*** 报告结束 ***

*** End of Report ***

检测报告无批准人签字及“报告专用章”无效，本报告检测结果仅对受测样品负责。未经 CTI 书面同意，不得部分复制本报告。

The test report is effective only with both signature and specialized stamp. The result(s) shown in this report refer only to the sample(s) tested. Without written approval of CTI, this report can't be reproduced except in full.